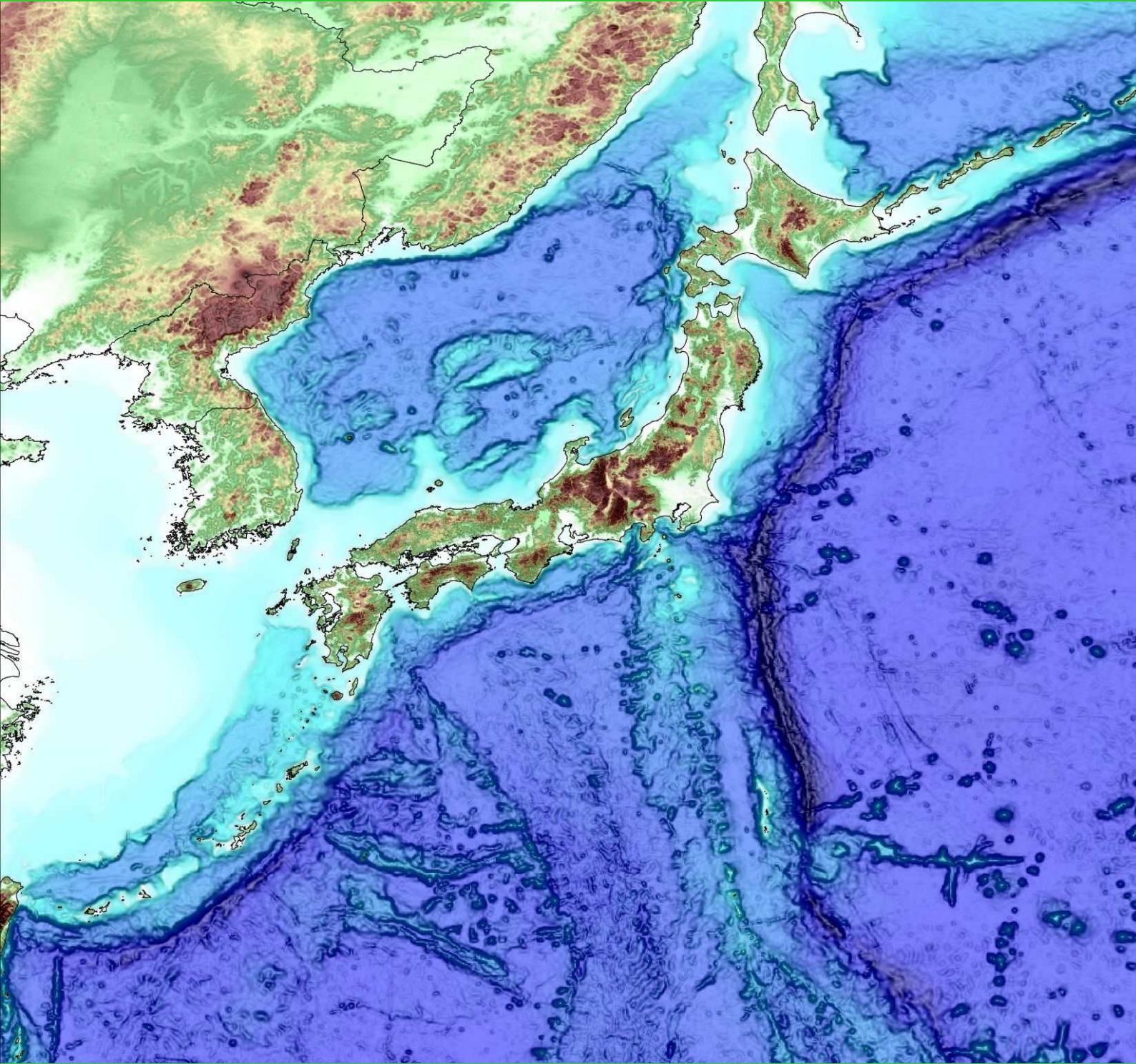




# Japan Society of Engineering Geology

Since 1958

2017



Japan National Group of IAEG

## IAEG-JAPAN

(The International Association for Engineering Geology and the Environment)



## Chairman Greeting

Japan Society of Engineering Geology (JSEG) established in 1958, has a goal to facilitate the interchange among the researchers and professionals of engineering geology, to pursue the interdisciplinary and comprehensive research and technological development, and then to contribute to the development of science, technology, and culture. We will celebrate the 60 year's memorial in 2018. Now, the member is about 2000, and 90 IAEG members out of them.

JSEG has developed in the field of engineering geology in accordance with the economic development of Japan; but the fields and the schemes of social requirement to the applied geology have widened to include environment, disaster mitigation, and geoinformatics. These changes are, from another aspect, due to the expansion of the expectation to the applied geology. The Science Council of Japan has established the document Japan Perspective, in which the committee of earth and planetary sciences declared the importance of natural disasters and professionals of earth science. This is closely related to the JSEG.

Dr. Daiei Inoue, past president of JSEG had proposed IAEG Asian Regional Conference (Asian Symposium) to develop and encourage the Engineering geology in Asian Region, and have been continued in Asian region at one year interval after Tokyo. This conference has restarted from 10th memorable Kyoto Conference.



Chairman of the  
IAEG Japan National Group  
Masahiro Chigira



Mt. Fuji, view from north



Shiraito fall, south west of Mt. Fuji



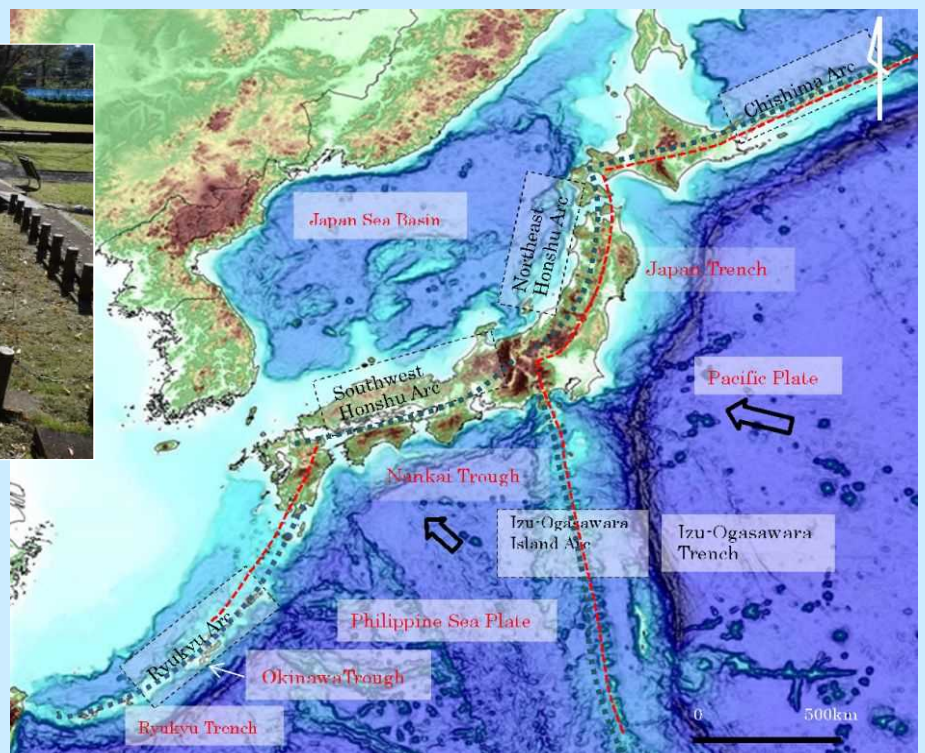
Red leaves in Kamakura,  
west of Tokyo

## History of JSEG

- 1992 Council meeting was invited at Kyoto together with IGC.
- 1997 The first Asian Symposium (Regional Conference) of Engineering Geology was held in Tokyo.
- 2008 JSEG celebrated 50th anniversary at Yokohama.
- 2015 Memorial 10th Asian Regional Conference, in Kyoto.



Record of the movement  
Of the Tanna active fault, 1932



General topographic view around Japan



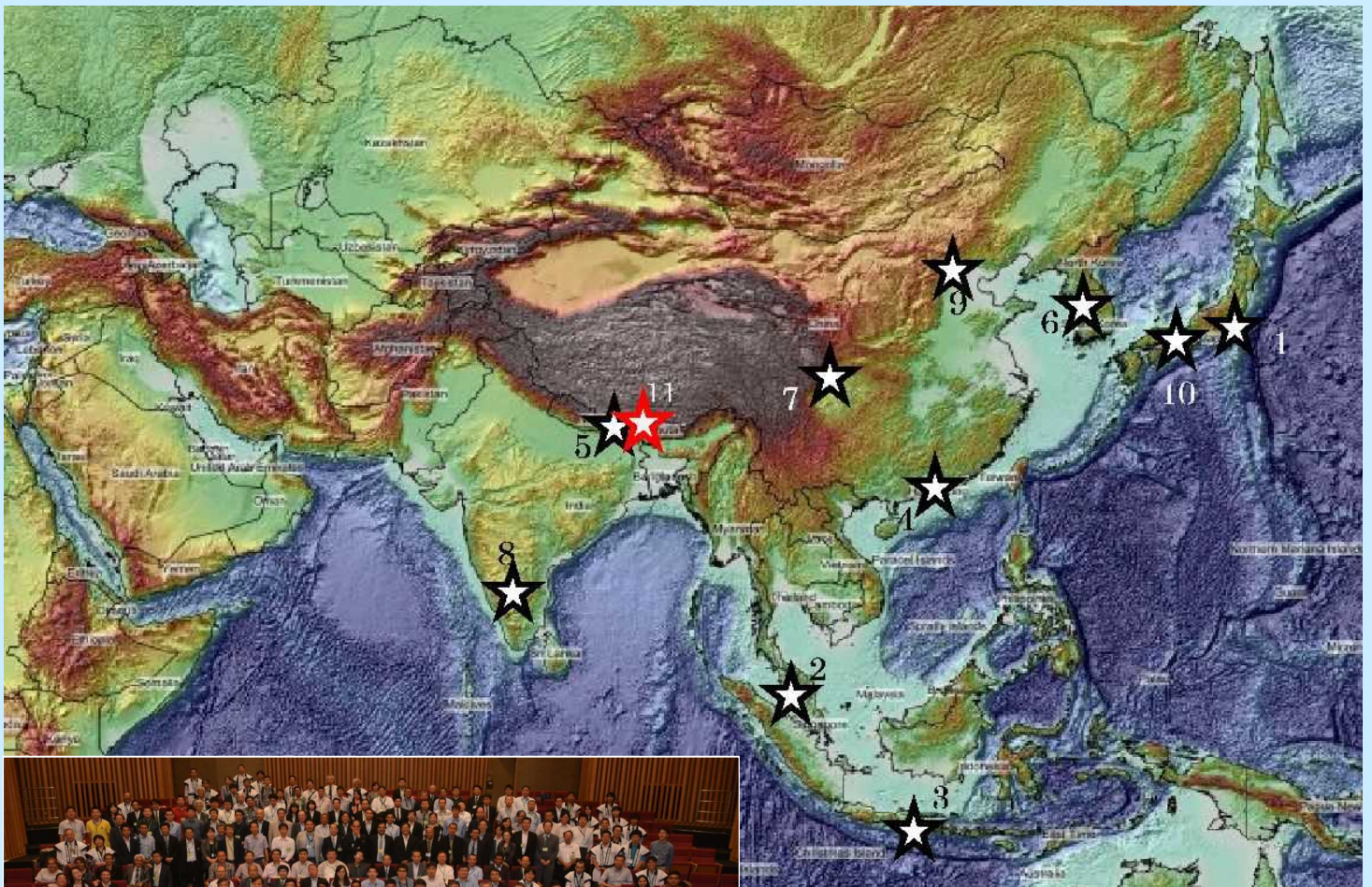


# History of Asian Symposium (IAEG Regional Conference)

Dr. Daiei Inoue, past president of JSEG proposed this Symposium to develop and encourage the Engineering Geology in Asian Region. Main theme of this first time Symposium was Dam Geology. After in Tokyo, the Symposium (Asian Regional Conference) have been continued at one year interval shown in below table.

## History of Asian Regional Conference

Year	Country	Place	Main Theme	
1 <sup>st</sup>	1997	Japan	Tokyo	Engineering Geology for Dam
2 <sup>nd</sup>	1999	Malaysia	Kuala Lumpur	6 themes for Engineering Geology and Environment
3 <sup>rd</sup>	2001	Indonesia	Yogyakarta	Natural resources Management for Regional Development in Tropical Area
4 <sup>th</sup>	2004	Hong Kong	Hong Kong	Engineering Geology for Sustainable Development in Mountain Areas
5 <sup>th</sup>	2005	Nepal	Kathmandu	Engineering Geology for Major Infrastructure Development and Natural Hazards Mitigation
6 <sup>th</sup>	2007	Korea	Seoul	Asian Regional Conference on Geohazards in Engineering Geology
7 <sup>th</sup>	2009	China	Chengdu	Geological Engineering Problem in Major Construction Projects
8 <sup>th</sup>	2011	India	Bangalore	Underground Space Technology in Civil Engineering and mining sectors
9 <sup>th</sup>	2013	China	Beijing	Global View of Engineering Geology and Environment
10 <sup>th</sup>	2015	Japan	Kyoto	Geohazards and Engineering Geology
11 <sup>th</sup>	2017	Nepal	Kathmandu	Engineering geology for Geodisaster Management



Group photo of 10<sup>th</sup> Asian Regional Conference in Kyoto, 2015





JSEG Investigation Team For Landslide disaster,2017



Landslide induced by *Kumamoto* Earthquake,2016



Debris flow disasters in *Hiroshima* prefecture caused by heavy rainfall in August,2014



Eruption of *Ontake* Volcano in September,2014



A large-scale landslide in the upstream basin of the *Aratogawa* reservoir, caused by the *Iwate-Miyagi Nairiku* earthquake occurred in 2008.



Large landslide, south of *Kyoto*

The cover explanation: color altitude inclination chart (ELSAMAP) around the Japanese Islands . Color altitude inclination chart ELSAMAP is new geographical features expression technique for uniting "Change in the altitude" and "Change in the inclination". DEM used is SRTM3(Japanese Islands) and ETOP2(Surrounding of the Japanese Islands). (KOKUSAI KOGYO Co.,LTD. offered)



## Japan Society of Engineering Geology